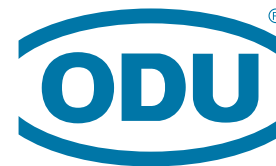
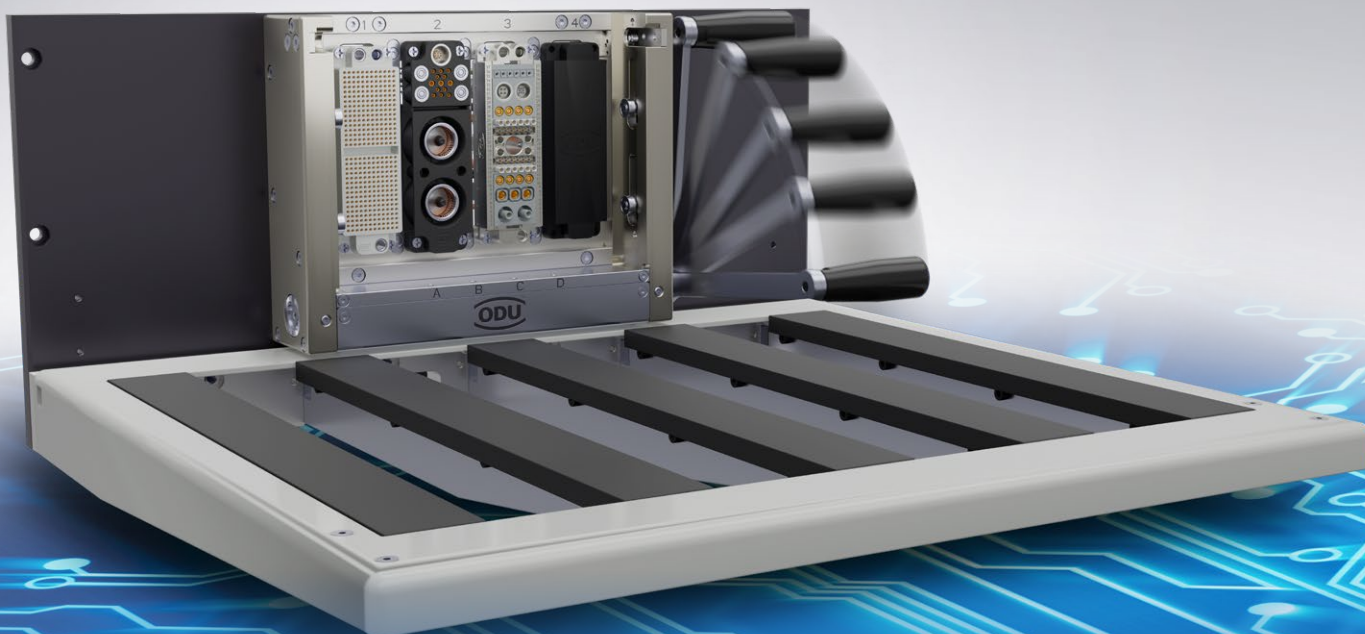


ODU-MAC[®] Black-Line

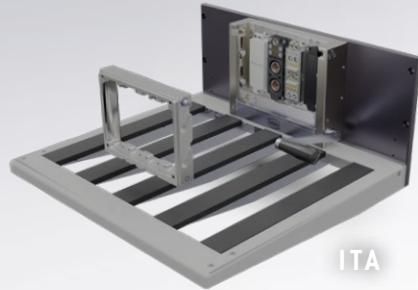
THE NEW COMPACT CLASS



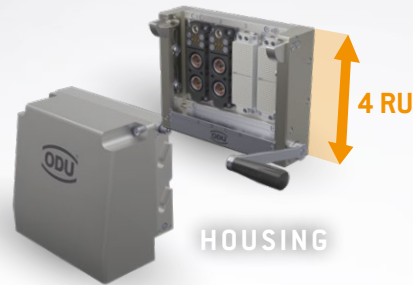
HDMI   
ODU HIGH SPEED DATA TECHNOLOGY



4-FLEX FOUR M – THE NEW COMPACT CLASS FOR MASS INTERCONNECT SYSTEMS



ITA



HOUSING



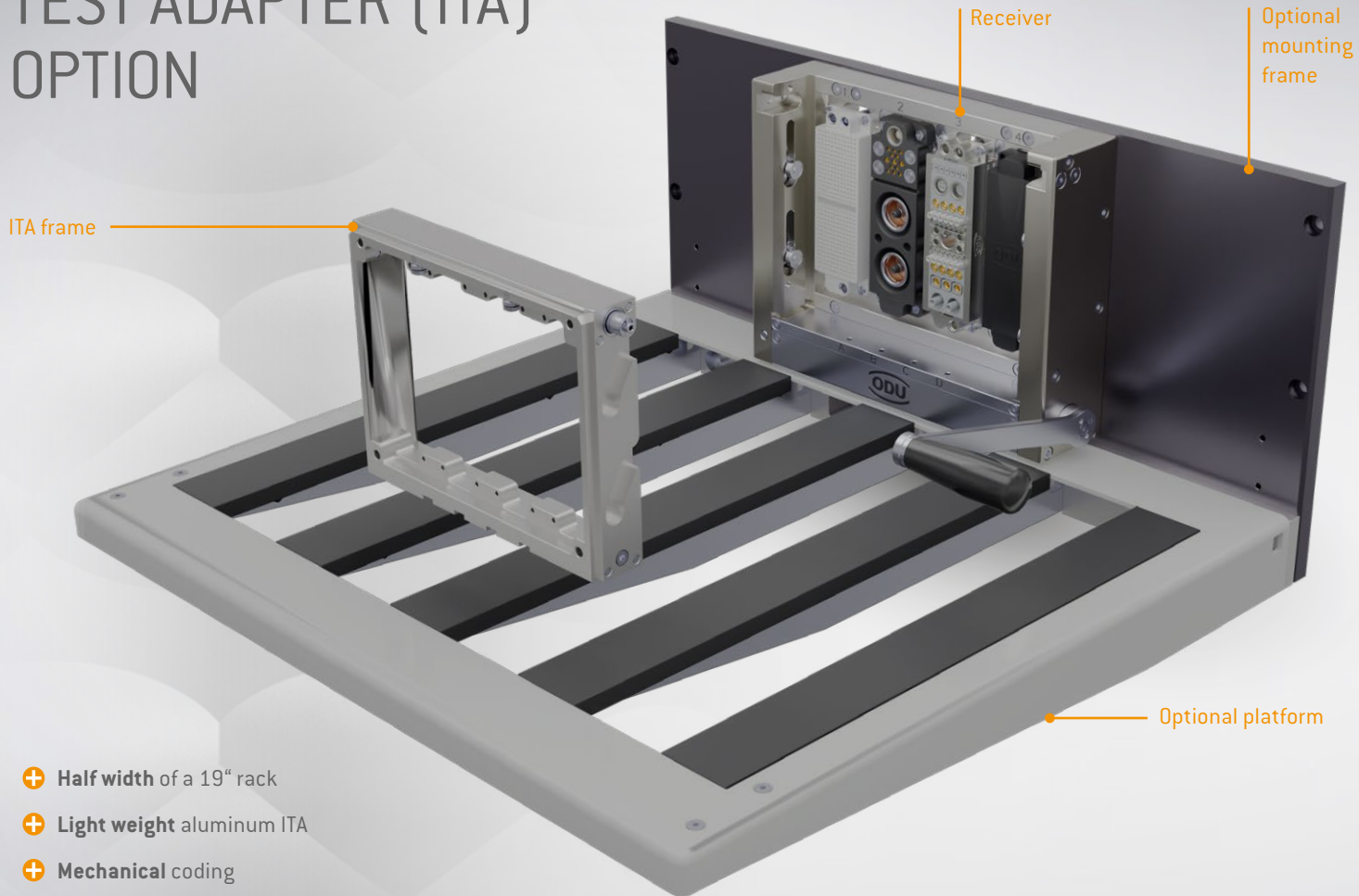
CONNECTOR

DOCK.
TEST.
DONE.

- + **Cost-effective**, compact interface for **various applications**
- + One receiver for different options: **ITA • Housing • Connector**
- + **Equippable with various ODU-MAC® Blue-Line modules:** Signal, power, high-current, RF signals (coax), compressed air, fluid coupling, data and fiber optics

Up to
1,536
signals

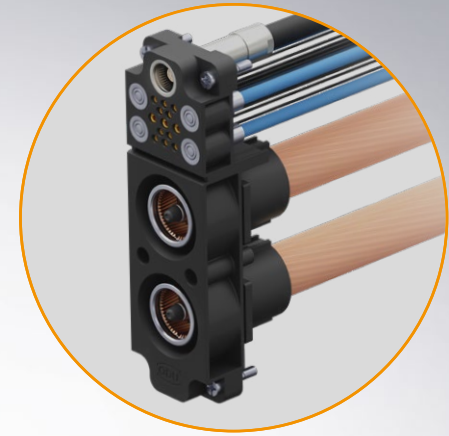
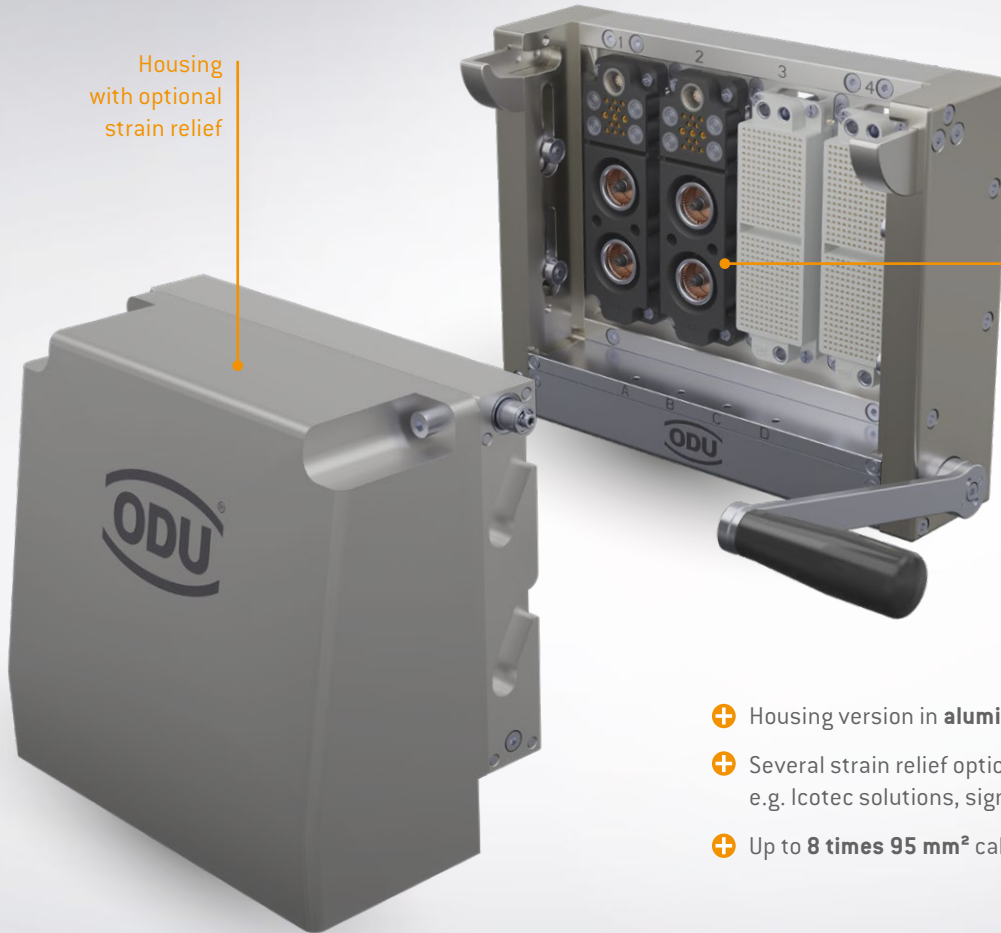
INTERCHANGEABLE TEST ADAPTER (ITA) OPTION



- + Half width of a 19" rack
- + Light weight aluminum ITA
- + Mechanical coding

HOUSING OPTION

Housing
with optional
strain relief



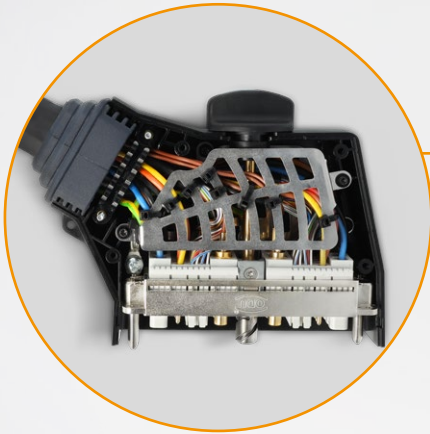
ODU-MAC® Power Connector
HB16 Hybrid block

- Combination of high-current and high-voltage
- Up to 600 A
- Fluid, data and signal optional

- + Housing version in **aluminum**
- + Several strain relief options available e.g. Icotec solutions, signal strain relief
- + Up to **8 times 95 mm²** cable outlet

CONNECTOR OPTION

- + Direct connection with an ODU-MAC® Rapid connector possible
- + Up to 4 ODU-MAC® Rapid connectors equipable
- + Fully modular interface due to individual modules



ODU-MAC® Rapid connector

- Practical half-shell principle for quick adjustments
- Space-saving design with simple spindle-lock mechanism





Printed on certified
recycled paper.

All dimensions are in mm.
Some figures are for illustrative purposes only. Subject to change
without notice. Errors and omissions excepted. We reserve the right to
change our products and their technical specifications at any time in
the interest of technical improvement. This publication supersedes all
prior publications.

ODU-MAC® BLACK-LINE / 0V / 0225 / EN

This publication is also available as a PDF file that can be downloaded
from odu-interconnect.com